

# MEDUSA<sup>4</sup>

VERSION 5.0.1

Personal

Installation Guide



---

All rights reserved. No part of this documentation may be reproduced in any manner (print, photocopy or other) without the written permission of CAD Schroer GmbH.

CAD Schroer GmbH has made its best effort to ensure that the information in this document is accurate and reliable, but cannot guarantee the accuracy, timeliness, reliability or completeness of any of the information contained herein. CAD Schroer GmbH will not make any warranty nor accept legal responsibility or liability of any kind for consequences resulting from errors or omissions.

Registered Trademarks of CAD Schroer GmbH:  
MEDUSA, STHENO

Trademarks of CAD Schroer GmbH:  
MEDUSA<sub>4</sub>, STHENO/PRO, MEDEA, MPDS

Third-Party Products and Trademarks:  
Pro/ENGINEER, Pro/DETAIL and Pro/TOOLKIT are registered trademarks of Parametric Technology Corporation.

All other brand or product names are trademarks or registered trademarks of their respective owners.

January 2011

Copyright © CAD Schroer GmbH  
Fritz-Peters-Str. 26 - 30  
D - 47447 Moers

## Germany

**CAD Schroer GmbH**  
**Fritz-Peters-Str. 26-30**  
**47447 Moers**

Tel. +49 2841 91 84 - 0  
Fax +49 2841 91 84 - 44  
e-mail: [info@cad-schroer.de](mailto:info@cad-schroer.de)  
[www.cad-schroer.de](http://www.cad-schroer.de)

## France

**CAD Schroer France SAS**  
**17, Rue du Docteur Lebel**  
**94300 Vincennes**

Tel. +33 1 41 94 51 40  
Fax +33 1 43 77 17 68  
e-mail: [info@cad-schroer.fr](mailto:info@cad-schroer.fr)  
[www.cad-schroer.fr](http://www.cad-schroer.fr)

## Italy

**CAD Schroer Italia S.R.L.**  
**Via Piave, 1/E**  
**20030 Senago (MI)**

Tel.: +39 02-38303267  
Fax: +39 02-33303399  
e-mail: [info@cad-schroer.it](mailto:info@cad-schroer.it)  
[www.cad-schroer.it](http://www.cad-schroer.it)

## Switzerland

**CAD Schroer AG**  
**Bettlistr. 35**  
**8600 Dübendorf**

Tel. +41 44 802 89 - 80  
Fax +41 44 802 89 - 88  
e-mail: [info@cad-schroer.ch](mailto:info@cad-schroer.ch)  
[www.cad-schroer.ch](http://www.cad-schroer.ch)

## United Kingdom

**CAD Schroer UK Ltd**  
**39 Newnham Road**  
**Cambridge**  
**CB3 9EY**

Tel. +44 1223 460 408  
Fax +44 1223 460 409  
e-mail: [info@cad-schroer.co.uk](mailto:info@cad-schroer.co.uk)  
[www.cad-schroer.co.uk](http://www.cad-schroer.co.uk)

## USA

**CAD Schroer US, Inc.**  
**34 Rand Place**  
**Pittsford, NY 14534**

Tel: +1 866-SCHROER (866-724-7637)  
Fax: +1 866-724-1701  
e-mail: [info@cad-schroer.com](mailto:info@cad-schroer.com)  
[www.cad-schroer.com](http://www.cad-schroer.com)

---

# INSTALLATION

---

- Introduction ..... 4
- Systems Requirements ..... 5
- Installing MEDUSA ..... 6

## Introduction

Please read this guide before you install your MEDUSA software - it includes important information on the correct installation of the product.

Before you start the installation, please close all applications.

**Please note: Windows:** For running MEDUSA the Visual C++ 2008 Redistributable Package is required (*vc redistrib\_x86.exe*). If necessary, it will be installed automatically before the installation of MEDUSA.

For quick and easy installation, obtain your license keyfile prior to installing the software.:

The CSG Installation Wizard will guide you through the setup process. If errors occur during installation, these are reported in the file *log.txt* in the installation path.

## Systems Requirements

**Please note:** The system requirements for the Personal version differ from the full version. Therefore ignore the system requirements given in the Release Notes in the *meddoc\doc* path.

You will need 600 MB (Windows) respectively 750 MB (Linux) of free disk space, and a minimum of 512 MB of RAM.

### Windows

MEDUSA Personal runs on Windows XP (SP2 or 3), Windows Vista or Windows 7.

### Linux

MEDUSA Personal runs on the following Linux distributions:

Distribution	Version
CentOS	5.4, 5.5
Fedora	13, 14
Red Hat EL	5.4, 5.5
openSUSE	11.1, 11.2, 11.3
Ubuntu	9.10, 10.04, 10.10

For running MEDUSA Personal a `csch` or `tcsh` shell is required. If there is no `csch` or `tcsh` shell installed, install it, for example, using the following command:

Distribution	Command
CentOS, Fedora, Red Hat EL	<code>yum install tcsh</code>
openSUSE	<code>zypper install tcsh</code>
Ubuntu	<code>sudo apt-get install csh</code>

## Installing MEDUSA

### Linux

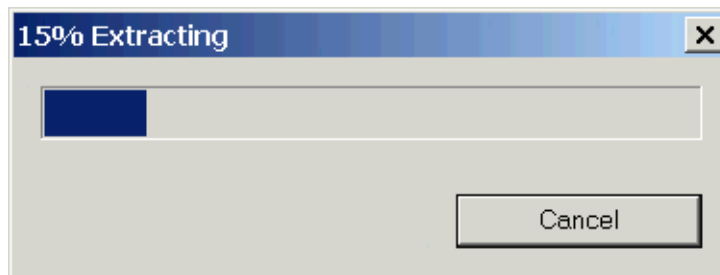
For the installation you have to be superuser (`root`). Open a terminal and run the file `medusa_v5_0_1_linux_personal.sh`.

Having extracted the installation files, the Installation Wizard will be started, see [“Installation Wizard” on page 7](#).

### Windows

For the installation you need Administration rights.

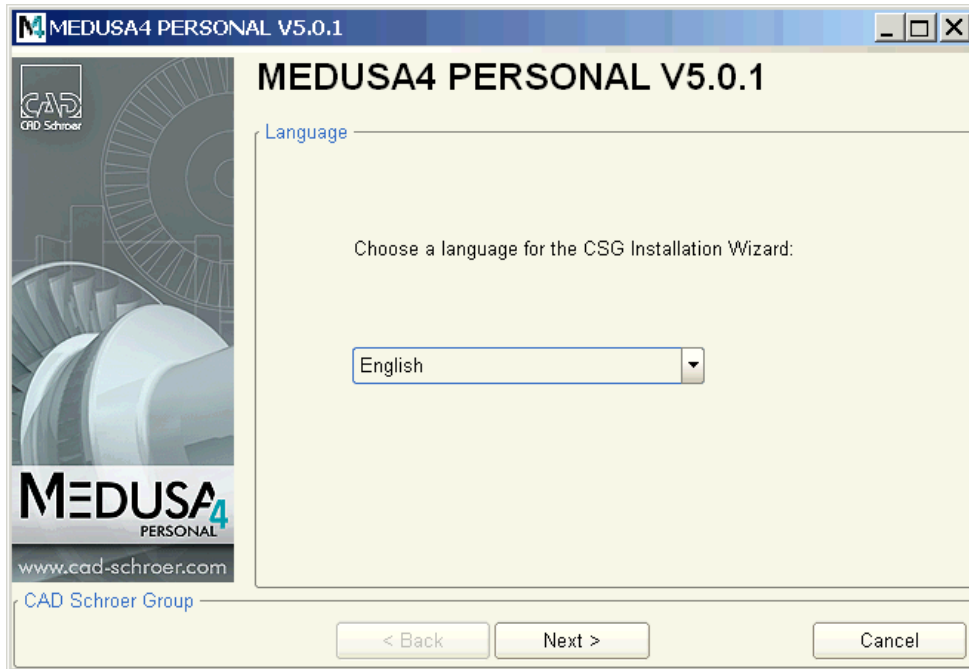
After having started `medusa_v5_0_1_windows_personal.exe` the first window shows that the installation files are extracted into a temporary directory.



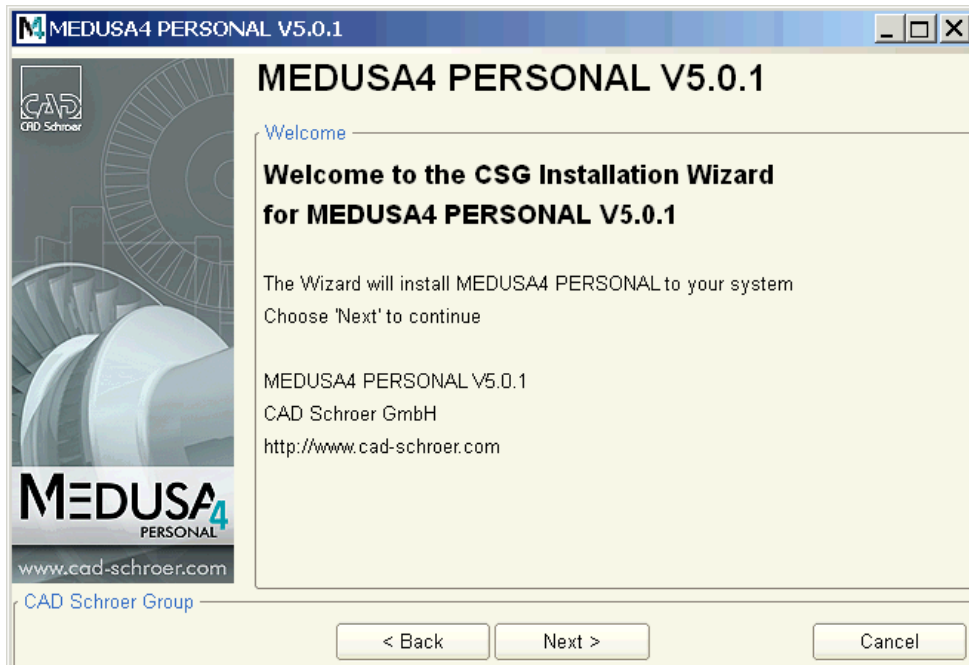
Having extracted the installation files, the Installation Wizard will be started, see [“Installation Wizard” on page 7](#).

## Installation Wizard

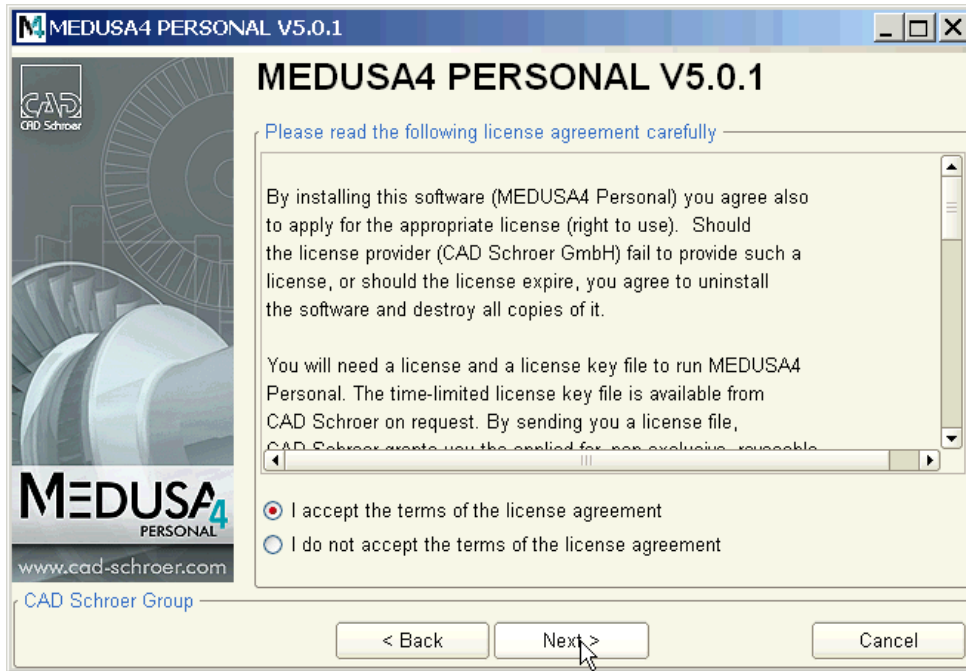
In the first window of the Installation Wizard choose the language for the Installation Wizard. The actual MEDUSA product language can be chosen in a later step:



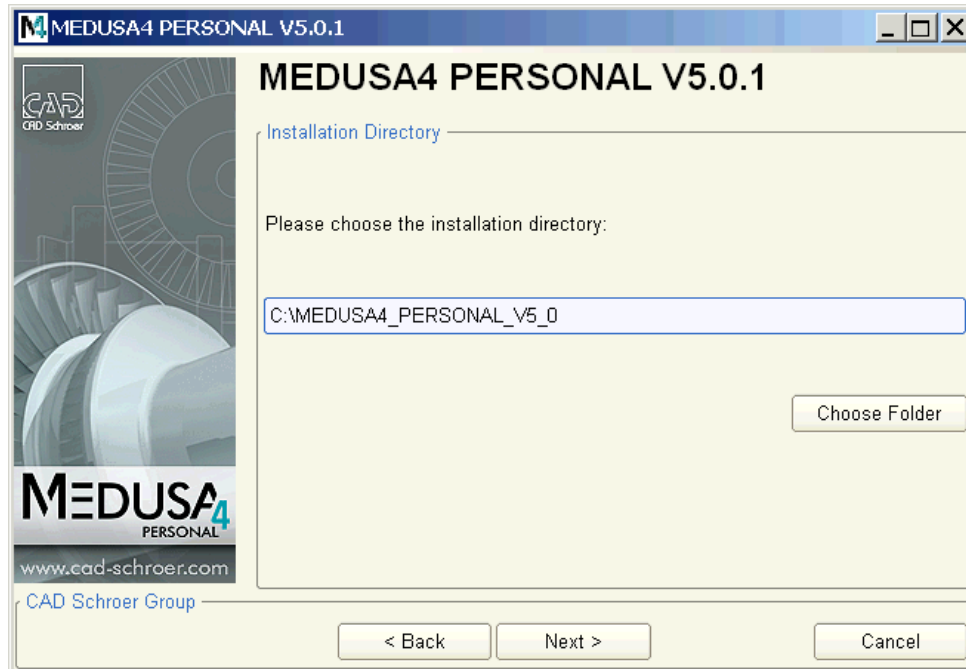
Click Next in the welcome screen.



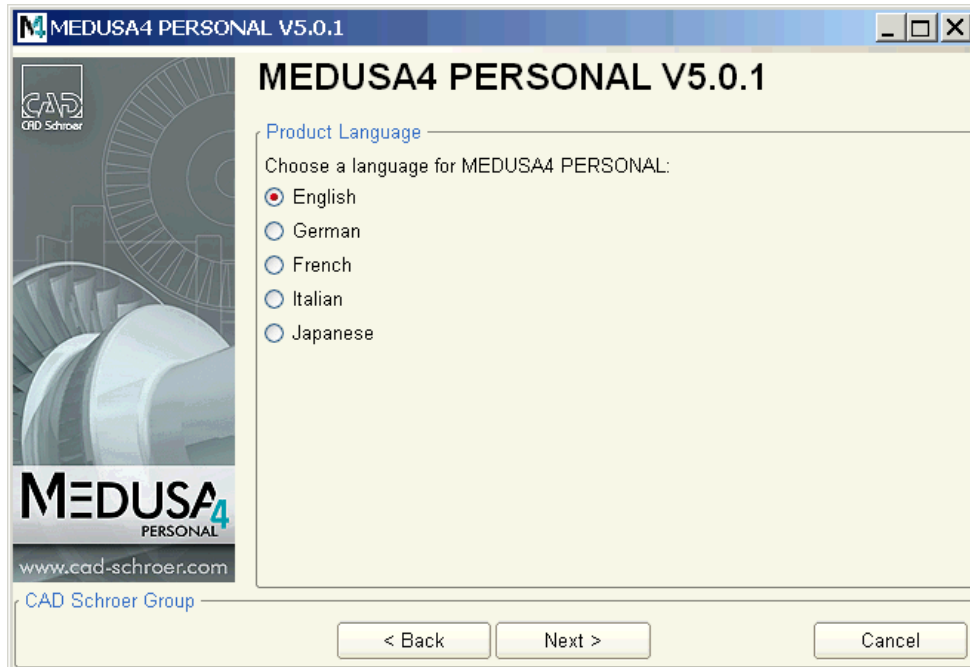
You must accept the terms of the license agreement and click **Next** in order to be able to continue.



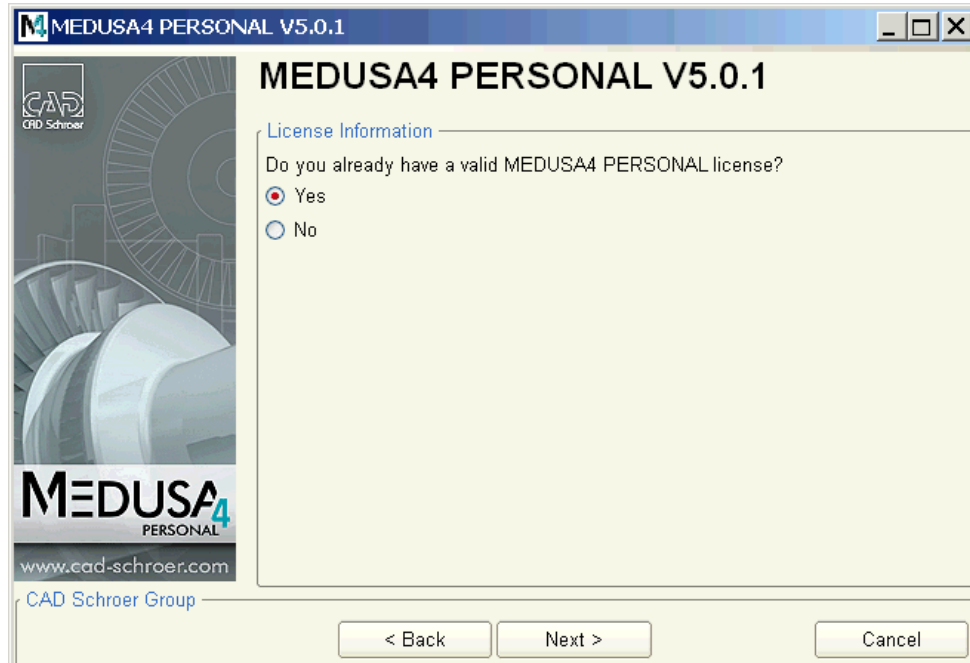
Choose the MEDUSA installation folder (please ensure that the path name contains no blank spaces or special characters).



Choose the MEDUSA software language.

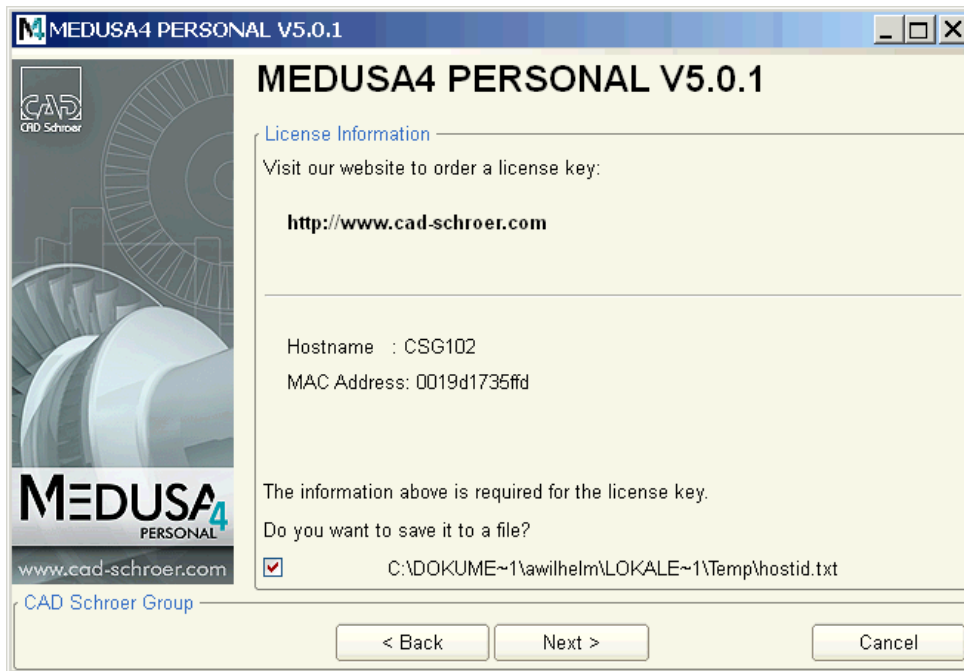


If you already have a license file, choose **Next** in the following window without changing the default option **Yes**.



If you chose the **No** option, the installation process will automatically launch the license registration form on the CSG Website in a subsequent step (if you have an internet connection)

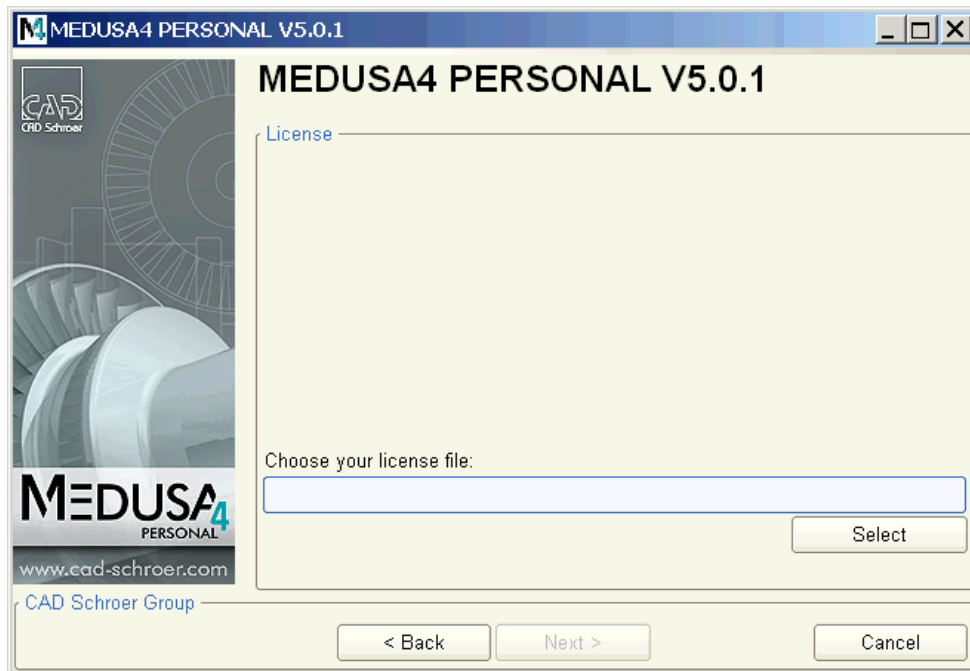
available). For your free personal license we will need your computer's host ID (MAC Address). This dialog gives you the appropriate information and allows you to save it in a text file.



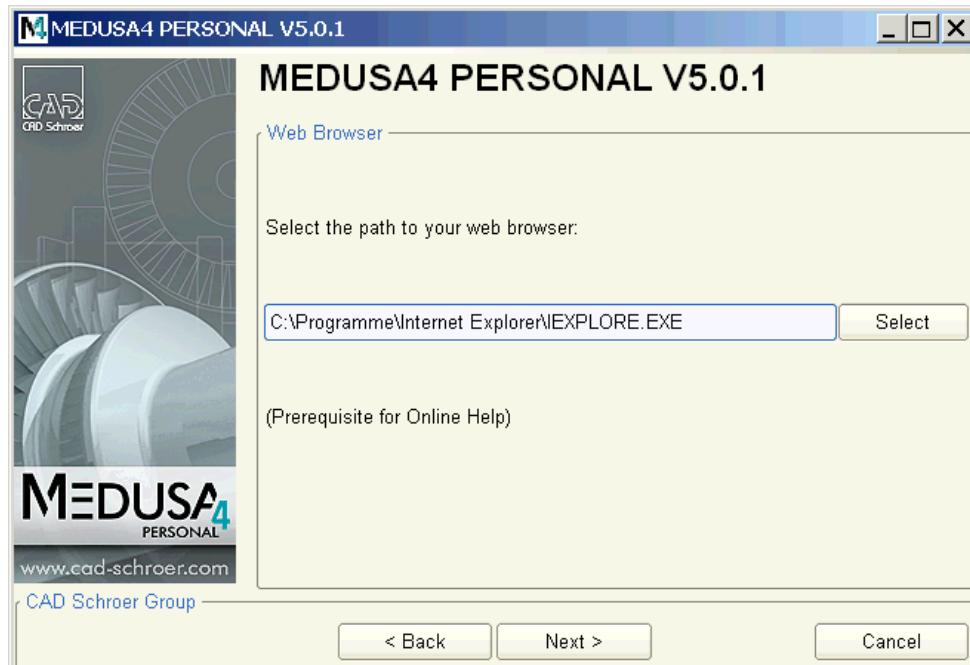
**Please note:** If your computer contains several network cards, the MAC addresses of all of them will be displayed. Having installed MEDUSA, the network card, whose MAC address you gave for creating the license file, may not be deactivated or removed, otherwise MEDUSA will not start anymore.

**Please note:** If you have not yet received your license file, you can continue with the installation process. Once you receive the file, simply rename it to *csglmd.lic* and copy it to the following folder: *<medusa\_InstallDirectory>/medsys/med/license/*.

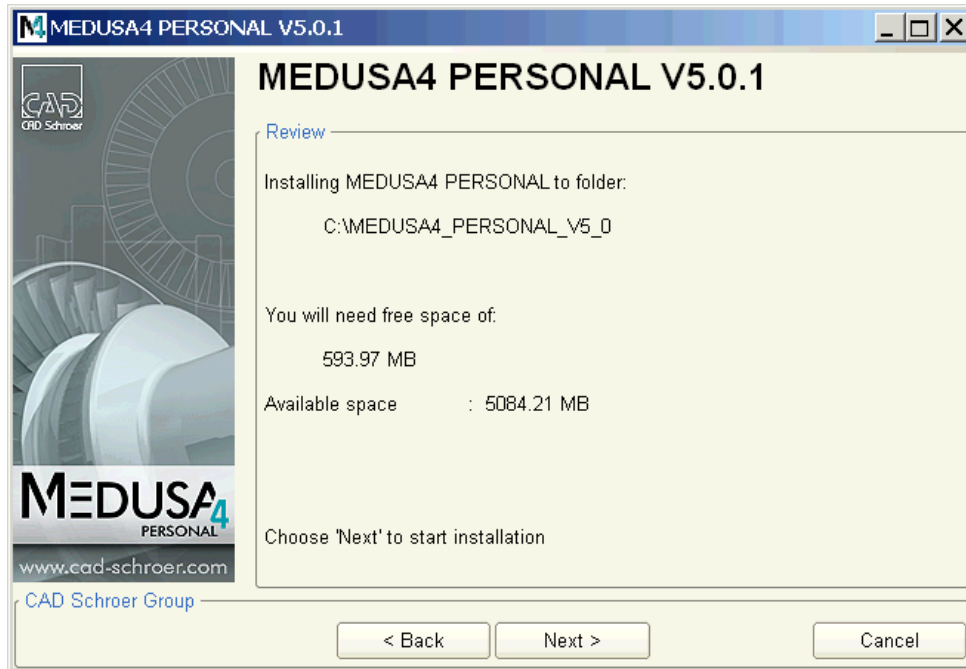
If you already have a license file and you chose the Yes option earlier, click the Select button in the window below to point to the location of the license file.



Select the path of your Web browser for displaying the online help files:



The next screen summarizes the features to be installed:



After installation, click **Finish** to close the Installation Wizard.